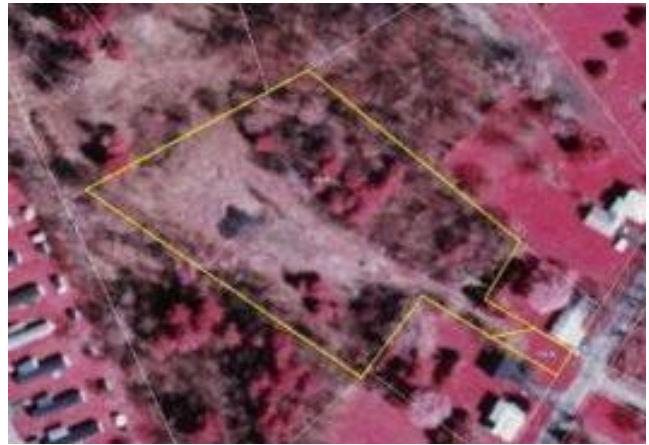




MOHAWK Towne & Country Realty

5696 St. Hwy 5, Palatine Bridge, New York 13428

Phone: 518 -673-5482 Fax: 518-673-5816



Price: \$16,500

Terms:

Total Acreage: 2.7 acres
 Wooded:
 Tillable:
 Pasture:
 Wetlands**:
 Terrain: level
 Road Type: Paved
 Water: Village
 Electric: at road
 Hunting: no
 Lake:

Zoning: Residential
 County: Montgomery
 Town: Monden
 School Dist: Fort Plain
 Amount:
 Village: Fort Plain
 Frontage: 38'
 Depth of Well:
 View: Village, Country
 Pond:
 Setting:

Assessment: \$15,600
 Total Taxes: \$1,440.24
 Map SBL#: 46.13-1-41
 Survey:
 Perked:
 Deep: Bk: BO353 Pg: 545
 School Distance: 1 mile
 Septic: Village sewer
 Stream:

Timber (kinds):
 Remarks: Nice building lot on quiet street, edge of Village, Access to all Village amenities.

Directions: Route 5s to Ft. Plain light; left through town, left on Rte 163, bear right after bridge, bear left on Garfield St, bear right at top of hill, property on right (no sign), call our office for details & map.