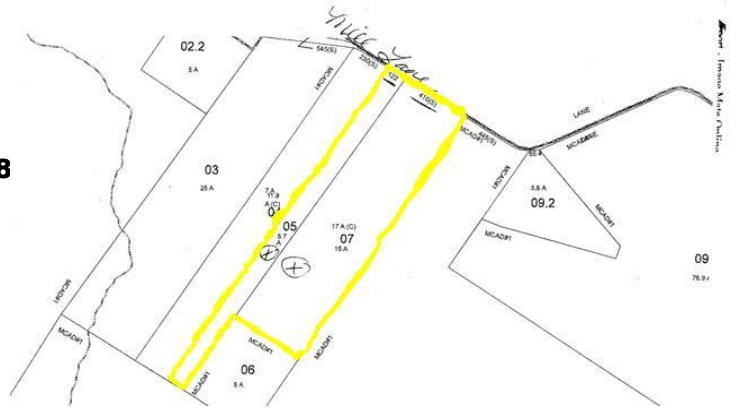




MOHAWK Towne & Country Realty

5696 St. Hwy 5, Palatine Bridge, New York 13428
Phone: 518 -673-5482 Fax: 518-673-5816



Price: **\$17,900** Lots 5 & 7

Terms: **Cash Only**
SOLD 6-11-10 \$14,250.

Total Acreage: **22.70 acres**
 Wooded: **most**
 Tillable:
 Pasture:
 Wetlands**:
 Terrain:
 Road Type: **paved**
 Water:
 Electric: **at road**
 Hunting: **deer, turkey, grouse, partridge**
 Lake:
 Timber (kinds):
 Remarks: **2 parcels / sep. deeds: SBL #59.-1-5; 122' fr, asst \$11,300; SBL# 59.-1-7; 410' fr asst \$19,200; Taxes: 5.7 Acres Sch. \$280.81; T/C \$\$164.88 17 acres Sch: \$477.15; T/C \$\$280.15**
Nice land for hunting, building, etc, privacy, very easily accessible, quiet area

Zoning: **Ag. - Residential**
 County: **Montgomery**
 Town: **Minden**
 School Dist: **Ft. Plain**
 Amount:
 Village:
 Frontage: **532 total ****
 Depth of Well:
 View:
 Pond:
 Setting:
 Stream:
 Septic:
 Deep: Bk: **Pg:**

Assessment:
 Total Taxes: **see remarks**
 Map SBL#: **see remarks**
 Survey: **none**
 Perked:
 School Distance: **Ft. Plain**

Directions: **Fr. Ft.Plain, rte 80 So, (7.6 mil) thru Hallsville, just after Herkimer County sign, left on Mill Lane. Property on left - green gate.**

